



# Betar

40 YEARS





## TIMELINE



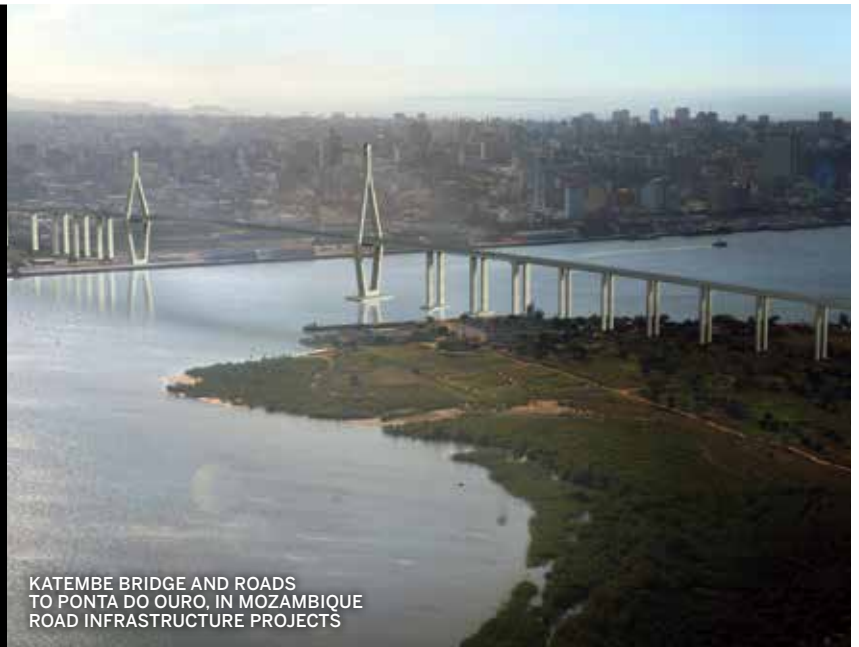
ESCOM GROUP SKY CENTER  
COMPLEX, IN LUANDA



## INFRASTRUCTURES



MARITIME TRAINING CENTRE  
AT SUMBE, IN ANGOLA  
WATER AND SEWERAGE  
INFRASTRUCTURES PROJECTS



KATEMBE BRIDGE AND ROADS  
TO PONTA DO OURO, IN MOZAMBIQUE  
ROAD INFRASTRUCTURE PROJECTS

## GEOTECHNICAL AND GEOLOGICAL ENGINEERING



CAMPO PEQUENO SQUARE, IN LISBON  
EXCAVATION AND PERIPHERAL RETAINING WALLS

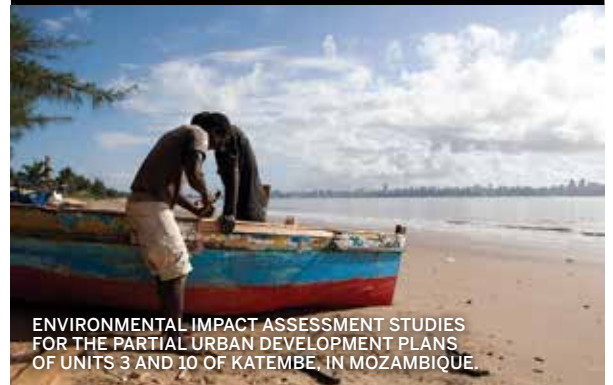


EN 115 ROAD – SLOPE STABILIZATION



RAILWAY BRIDGE AT MATOLA,  
MOZAMBIQUE  
GEOTECHNICAL SURVEY

## ENVIRONMENT



ENVIRONMENTAL IMPACT ASSESSMENT STUDIES  
FOR THE PARTIAL URBAN DEVELOPMENT PLANS  
OF UNITS 3 AND 10 OF KATEMBE, IN MOZAMBIQUE.



ECOLOGICAL ZONING PLAN  
FOR THE MUNICIPALITY OF MAPUTO



ENVIRONMENTAL POLLUTION RESPONSE PLAN  
FOR THE MUNICIPALITY OF MAPUTO



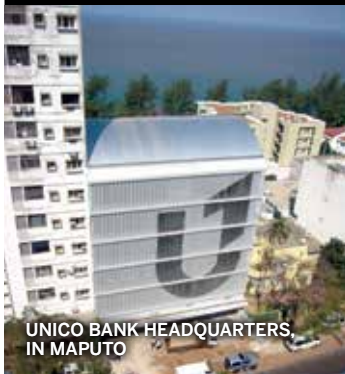
# BUILDINGS AND SPECIAL STRUCTURES



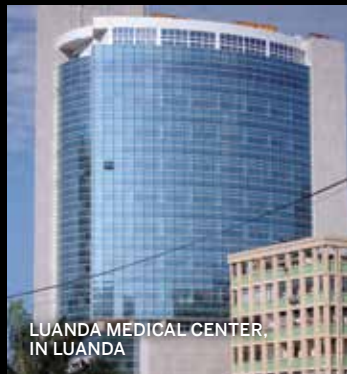
EPSILON 24 BUILDING, IN MAPUTO



EXPANSION AND RENOVATION  
OF MACHADO DE CASTRO MUSEUM, IN COIMBRA



UNICO BANK HEADQUARTERS,  
IN MAPUTO



LUANDA MEDICAL CENTER,  
IN LUANDA



BCI BANK HEADQUARTERS,  
IN MAPUTO



GUARULHOS AIRPORT NEW  
TERMINAL BUILDING, IN SÃO PAULO  
(TENDER DESIGN STAGE)



KINGS TOWER BUILDING, IN LUANDA



ARADE PAVILION



EXPANSION AND RENOVATION  
OF GARCIA DE ORTA SCHOOL,  
IN PORTO



CASA DAS MUDAS  
- CALHETA CENTER  
FOR THE ARTS, MADEIRA



HERON CASTILHO  
BUILDING, IN LISBON



CEIIA - CENTRE FOR  
THE AUTOMOTIVE INDUSTRY  
EXCELLENCY AND INNOVATION,  
IN MATOSINHOS



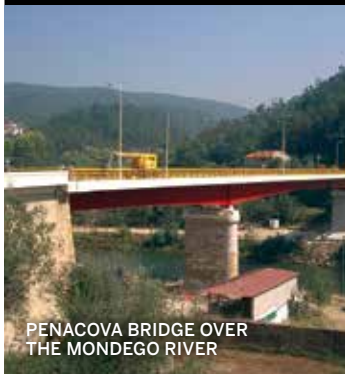
# BRIDGES AND TUNNELS



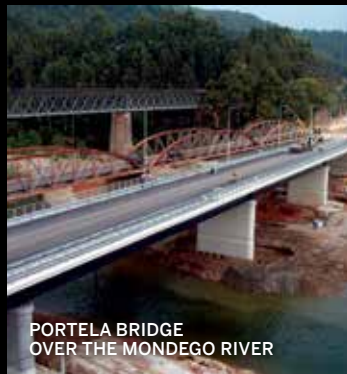
VARZEA VIADUCT,  
LITORAL OESTE HIGHWAY



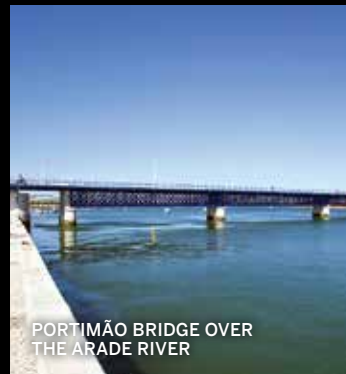
ARMANDO EMÍLIO GEBUZA BRIDGE,  
MOZAMBIQUE



PENACOVA BRIDGE OVER  
THE MONDEGO RIVER



PORTELA BRIDGE  
OVER THE MONDEGO RIVER



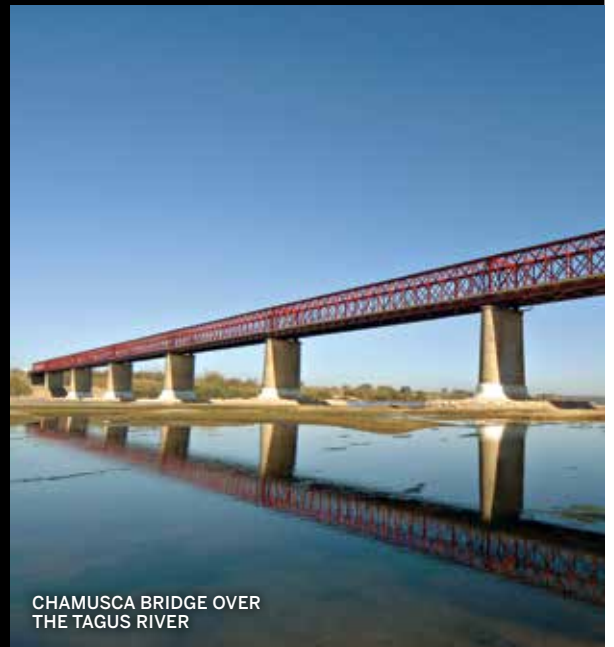
PORTIMÃO BRIDGE OVER  
THE ARADE RIVER



NOSSA SENHORA DA GUIA  
BRIDGE OVER THE LIMA RIVER



NEW BRIDGE AT TETE,  
OVER THE ZAMBEZI RIVER



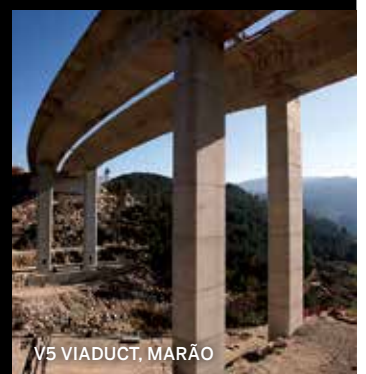
CHAMUSCA BRIDGE OVER  
THE TAGUS RIVER



3RD TAGUS CROSSING – CALAS  
BRIDGE OVER THE TAGUS



AVENIDA DA REPUBLICA TUNNEL,  
IN LISBON



V5 VIADUCT, MARÃO





KATEMBE URBAN DEVELOPMENT  
MASTERPLAN

## PROJECT MANAGEMENT



ELEPHANT BAY URBAN DEVELOPMENT  
PLAN, IN BENGUELA, ANGOLA

## STRUCTURAL INSPECTION AND EXPERT APPRAISAL

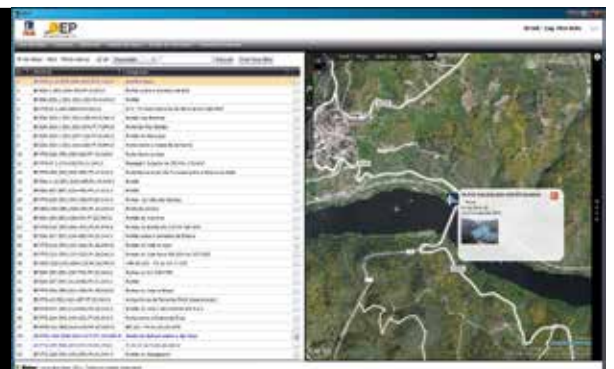


## ROAD ASSET MANAGEMENT



**GOA**  
GESTÃO DE OBRAS DE ARTE

**GOA**  
GESTÃO DE PÓRTICOS





## AT THE FOREFRONT OF ENGINEERING FOR MORE THAN 40 YEARS

BETAR Group started in 1973 as a small business in Structural Engineering, working on projects that became milestones in Portugal's construction history, like the Balaia Hotel in Albufeira and the Towers of Troia, in Setúbal.

Forty years on, and many works later, spread throughout the country and all over the world, Betar today is a truly multidisciplinary and global engineering company, developing structural projects for Buildings and Bridges – its lifelong passion - and extending its shared knowledge into the engineering fields of Water and Sewerage Infrastructure, Geology and Geotechnics, Road Infrastructure, Inspection and Management of Bridges, Viaducts and Special Structures, Urban Development Plans, Project Management and Site Supervision. The combination of these capabilities can be witnessed in the

work that BETAR has been developing in Maputo's expansion to the south of river, with the Katembe Bridge and MasterPlan or the new Marina in Luanda, in Angola.

Relying on its deep respect for Engineering, BETAR manages to develop its projects within a spirit of continuous innovation and independence, so that they reflect the requirements and purposes of the client and their outcome will contribute to a more developed and sustainable world.

With an open mind and willingness to innovate, BETAR developed and implemented the GOA Bridge Management System, as much a management tool as a set of procedures and methodology that have quickly become widespread throughout the country and abroad.

A leading name in Portuguese Civil Engineering, thanks to its scientific skills, tested and attained over forty years of activity, BETAR retains from birth its entrepreneurial dynamics, investing in the continuous training of its staff. Underwriting its institutional strength is also the professional attitude of everyone that works at BETAR to face all projects as challenges, continuously aiming to achieve the objectives, while respecting the quality of the design, meeting deadlines and fulfilling the desired budget.

BETAR is an ISO 9001 certified company since 2007.

BETAR Group is made up of the following companies: BETAR Estudos, BETAR Consultores, GEOTEST, BETA, MzBETAR and BTR.AO, with offices in Lisbon, Maputo and Luanda.



ARMANDO EMÍLIO GEBUZA BRIDGE,  
MOZAMBIQUE



## FIELD OF EXPERTISE

- Buildings and Special Structures
- Bridges and Tunnels
- Transport infrastructure
- Urban infrastructure
- Water Resources and management
- Structural Inspection and Expert Appraisal
- Structural Rehabilitation and Strengthening Design
- Geotechnical and Geological Engineering
- Environment
- Project Management
- Road Asset Management
- Site planning and supervision

## WORLD EXPERIENCE

- Portugal
- Angola
- Brazil
- Algeria
- Bulgaria
- Cape Verde
- Greece
- Spain
- Mozambique
- Senegal



**B**  
**Betar**



AV. ELIAS GARCIA 53 - 2º ESQ  
1000-148 LISBOA  
PORTUGAL  
TEL: +351 217 826 110  
FAX: +351 217 826 129  
WWW.BETAR.PT



AV. ELIAS GARCIA 53 - 2º ESQ  
1000-148 LISBOA  
PORTUGAL  
TEL: +351 217 826 110  
FAX: +351 217 826 129  
WWW.BETAR.PT



AV. 25 DE SETEMBRO 1509,  
4º - 5  
MAPUTO  
MOÇAMBIQUE  
TEL: +258 21 30 20 80  
WWW.BETAR.PT



RUA KWAMME N'KRUMAH,  
31 - 1ºD  
MAIANGA - LUANDA  
ANGOLA  
TEL: +244 943 528 271  
WWW.BETAR.PT



AV. 25 DE SETEMBRO 1509,  
4º - 5  
MAPUTO  
MOÇAMBIQUE  
TEL: +258 21 30 20 80  
WWW.BETA.CO.MZ



CENTRO EMPRESARIAL DE  
VIALONGA - FRACÇÃO D2  
2625-607 VIALONGA  
PORTUGAL  
TEL: +351 219 738 690  
FAX: +351 219 738 699  
WWW.GEOTEST.PT